

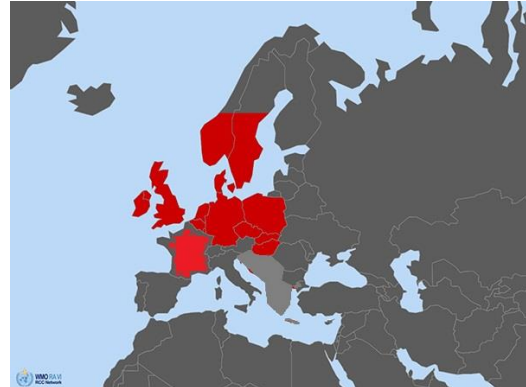
Guidance on **drought** ID: 202008-u1

Area concerned: Ireland, United Kingdom, southern Norway, southern Sweden, Denmark, Netherlands, Belgium, Luxembourg, France, Germany, Poland, Czech Republic, Slovakia, Hungary

Initial statement issued on 6 May 2020
First update issued on 19 May 2020

Valid: **Begin: 6 May 2020**
End: 2 June 2020

To: Climate Watch focal points of NMHS of Ireland, United Kingdom, Norway, Sweden, Denmark, Netherlands, Belgium, Luxembourg, France, Germany, Poland, Czech Republic, Slovakia, Hungary, Slovenia, Croatia, Bosnia-Herzegovina, Serbia, Montenegro, Albania, North Macedonia, Greece



The RA VI RCC Network Offenbach Node on Climate Monitoring (RCC Node-CM) is responsible for providing Climate Watch guidance information for NMHSs' own consideration for issuing climate advisories for their territory.

After having consulted the consortium partners of the RCC Node-CM and RCC Node-LRF (RA VI RCC Network Toulouse and Moscow Node on Long-Range Forecasting), RCC Node-CM issues the following guidance information:

Due to the results from monthly forecasts we expect:

“Below-normal precipitation during the next 2 weeks in Northwestern, Western and Central Europe. Weekly anomalies will be mostly between -10 and -30 mm, partly weaker. The probability is above 90% for the first week and 80-90% for the second week. The drought can have significant impact on agriculture and low water in rivers.

For Southeastern Europe, we announce the termination of this advisory. “

This information should be used as guidance for the National Meteorological and Hydrological Services (NMHS) in a pre-operational mode. It is up to the above-mentioned NMHSs to monitor the status and evolution of the current climate conditions closely and to consider issuing a national Climate Watch Advisory. RCC Node-CM would appreciate feedback from NMHS whether this information was helpful. Also, any suggestion on further pieces of information needed by NMHSs is highly welcomed!

A template for a national climate watch advisory can be provided by DWD on request as agreed among the climate watch pilots and RCC Node-CM.

Please note that further information can be obtained from RCC Node-CM website (www.dwd.de/rcc-cm) concerning Climate Monitoring and from RCC Node-LRF websites (<http://seasonal.meteo.fr> , <http://neacc.meteoinfo.ru/forecast>) concerning Long-Range Forecast or by e-mail to rcc.cm@dwd.de or rcc-lrf-mf@meteo.fr.

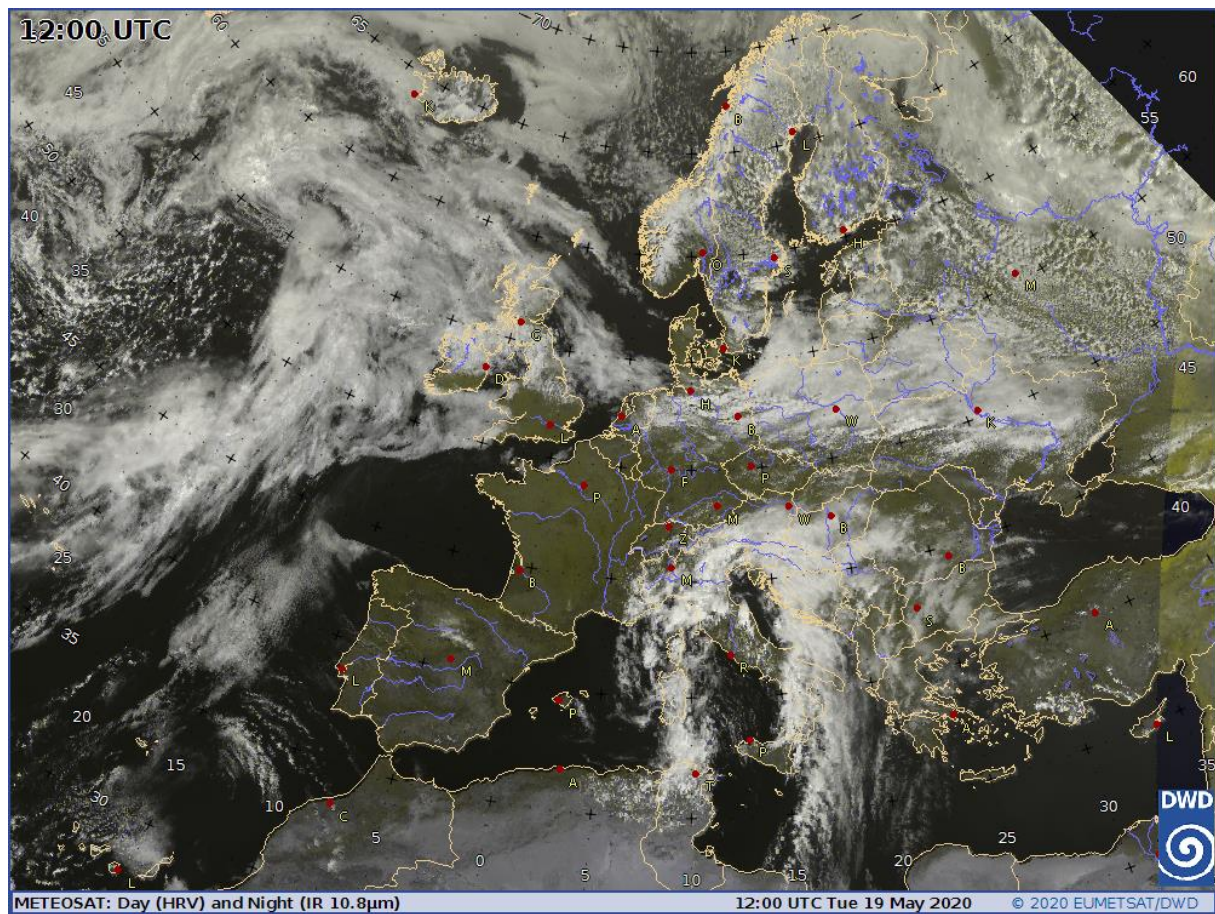
Climate Watch Advisory

For ECMWF members, further information on monthly forecasts after logging in is provided at <http://www.ecmwf.int/> ->Forecasts

We will monitor the evolution of the anomaly, issue updates if significant change arise and close the advice when no clear signal can be detected in the forecasts.

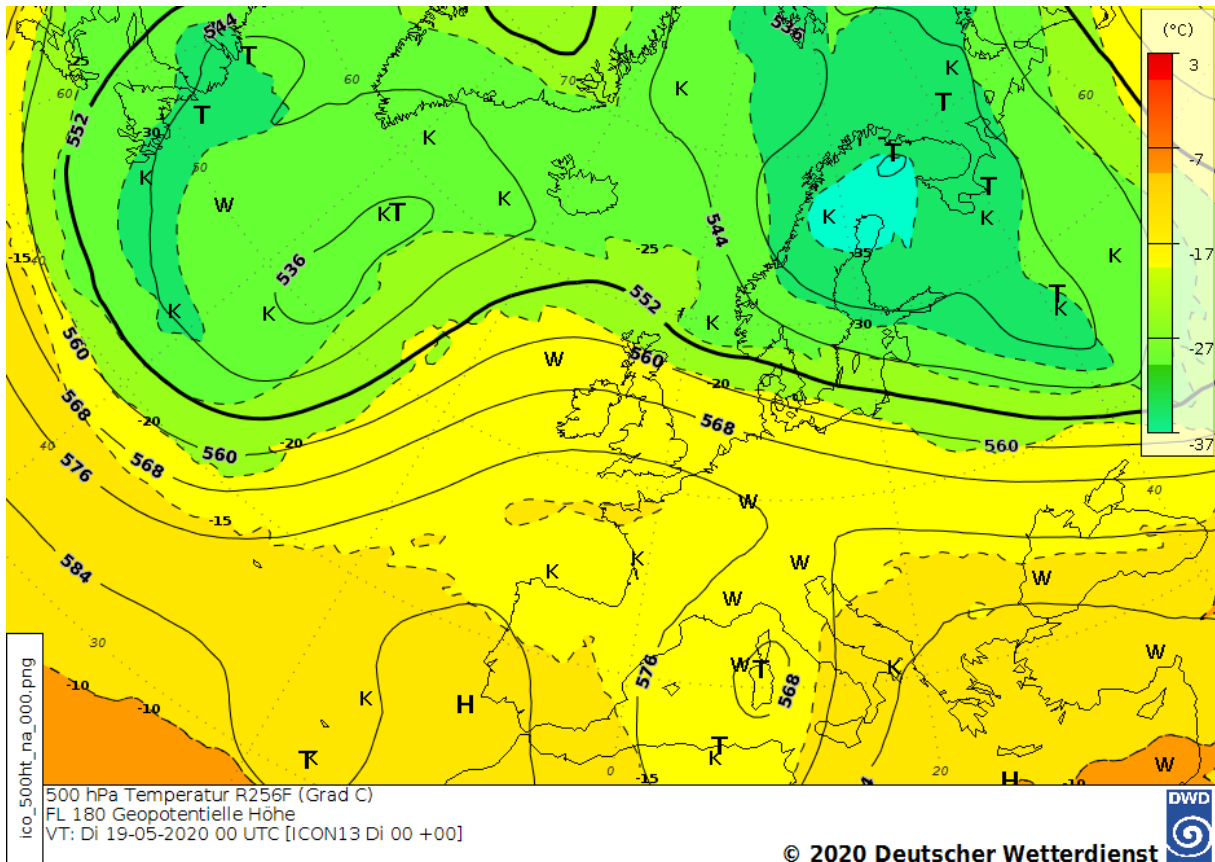
On behalf of the RCC Node-CM Team

Supplementary material:

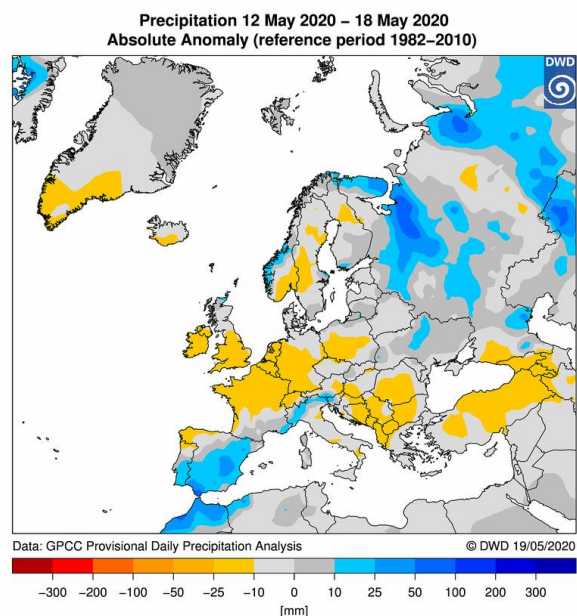
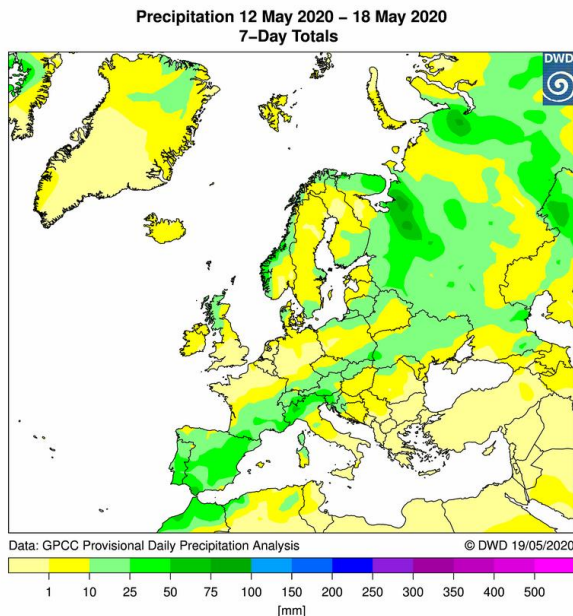


Meteosat satellite image 19 May 2020, 12 UTC. Source: DWD

Climate Watch Advisory

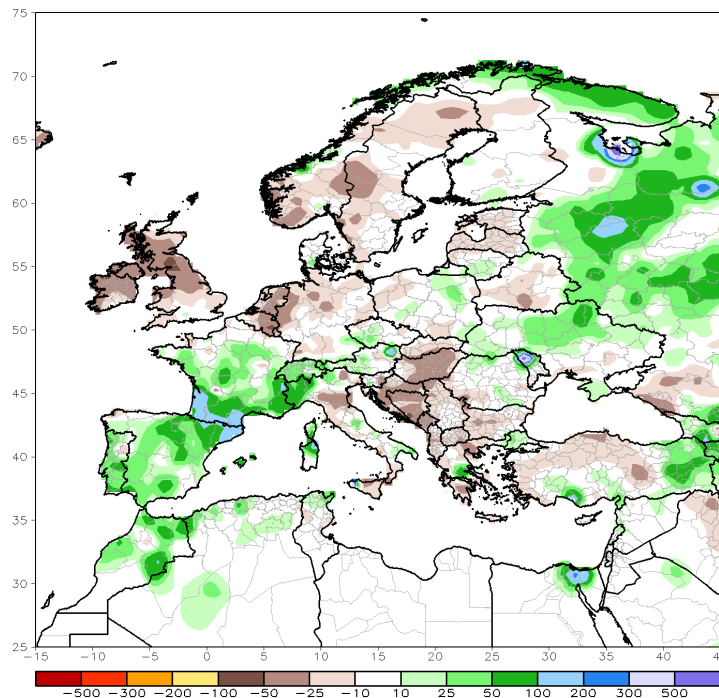


500-hPa chart, 19 May 2020, 00 UTC. Source: DWD

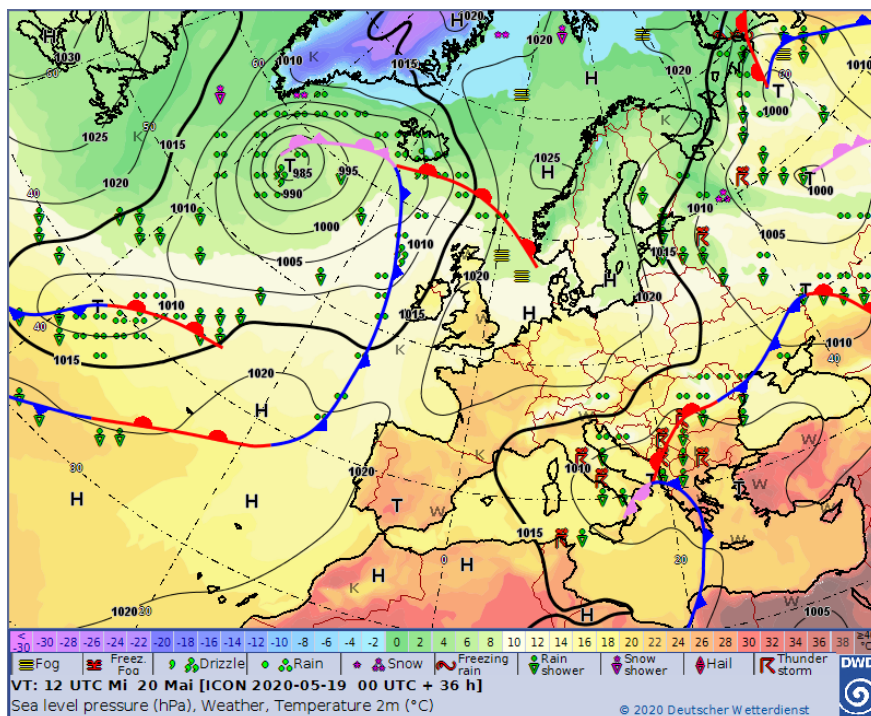


Precipitation totals and anomalies of the recent week. Source: DWD

CPC Unified Gauge 30-Day Total Rainfall Anomaly (mm)
Period: 18Apr2020 - 17May2020



Precipitation anomalies of the recent 30 days (1981-2010 reference). Source: NOAA CPC, https://www.cpc.ncep.noaa.gov/products/international/cpcuni_gauge/cpcuni_gauge_30day_eur_anom.gif



Forecast chart for 20 May 2020, 12 UTC, Source: DWD, https://www.dwd.de/EN/ourservices/hobymet_wcharts_europe/hobbyeuropecharts.html;jsessionid=18450C0FB47C1FB8EE913A5C65E8F74E.live11053